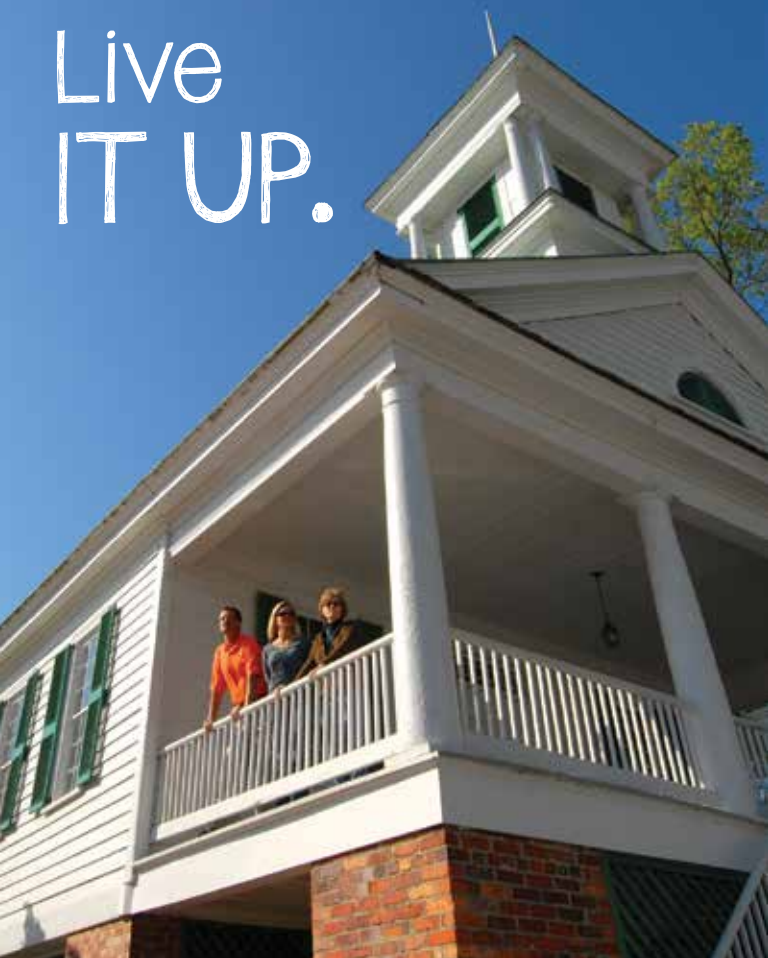


Live
IT UP.




CHERAW
South Carolina

Visitors Guide

www.VISITCHERAW.com

Welcome

From the moment you arrive in the
“Prettiest Town in Dixie”, get ready to
Live IT UP.

From the gorgeous architecture that predates the signing of the Declaration of Independence to our golf courses surrounded with woodlands and wildlife, Cheraw offers friendly faces, great times, and unique adventures.

However you choose to spend your time here, we want your stay to be enjoyable.

For personal assistance, stop by the Cheraw Town Hall at 200 Market Street or the Greater Cheraw Chamber of Commerce, located at 221 Market Street.

For more information, go to visitcheraw.com or call the Office of Tourism at 888.537.0014 weekdays 8:30-5.





CHERAW • SOUTH CAROLINA

Live LONG.

300 Years of History 2

Live (our) HISTORY.

History & Heritage Tours & Attractions 4

Live OUTSIDE.

Golf Courses 7

Hunting & Fishing..... 8

Live LARGE.

Outside Life 9

Parks & Recreation Centers 12

Live TO EAT.

Restaurants 14

Live COMFY.

Lodging & Shopping 16

Live HERE.

Useful Information 17

Live LIFE.

Annual Events 20

AREA MAP

Points of Interest 22

Live LONG.

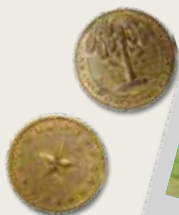
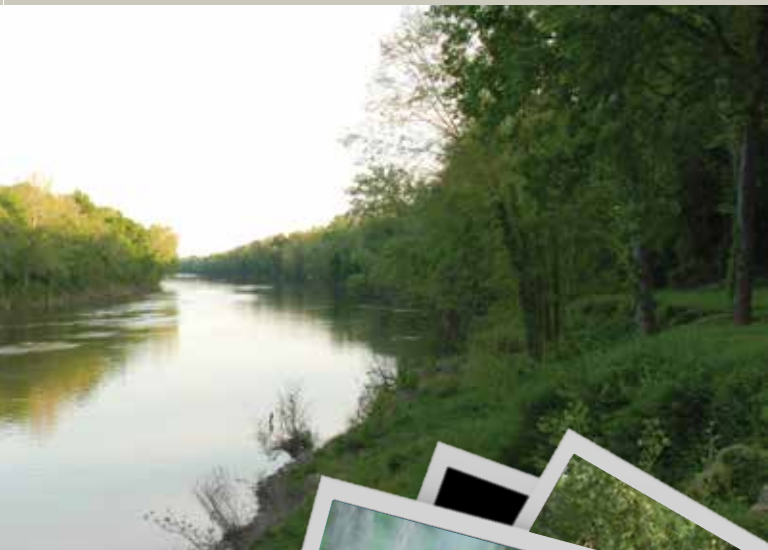


With over 300 years of history, Cheraw was named for the Cheraw Indians. Begun in the early 1700's as a small trading post on the Great Pee Dee River, Joseph and Eli Kershaw were granted part of present day Cheraw in 1768. The brothers formally laid out the present wide streets and town green, which is now the center of the town's 213-acre historic district listed on the National Register of Historic Places. Since Cheraw was at the head of navigable waters on the river, the town became a bustling river port during the 19th century, boasting the largest bank in South Carolina outside of Charleston and the largest cotton market between Georgetown and Wilmington.

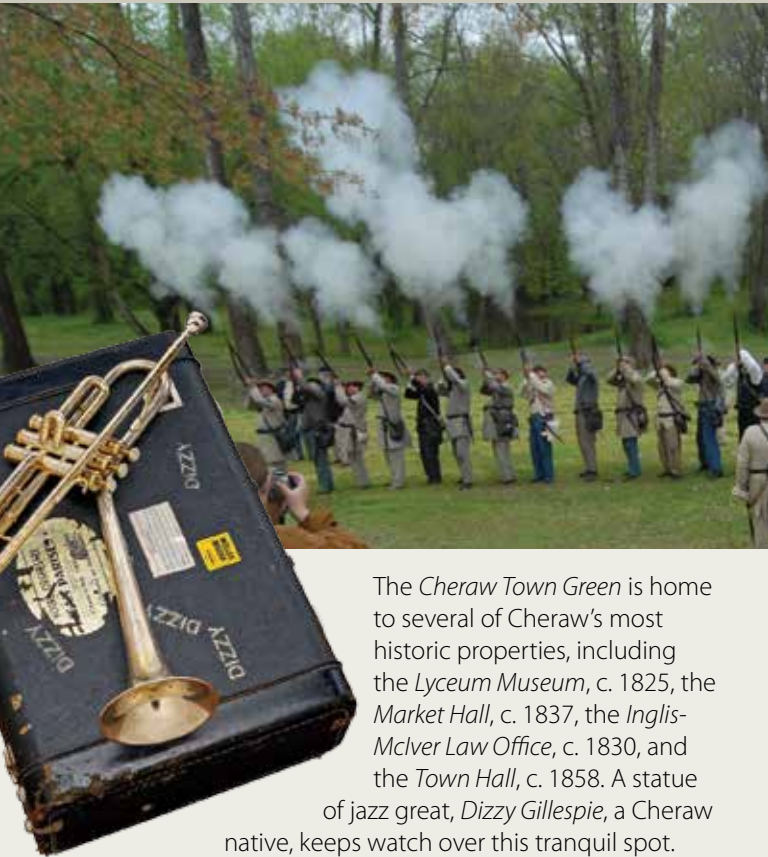


Cheraw was in the forefront of the South Carolina secession movement and was also in the path of General William T. Sherman's Union Army. Fortunately,

the town was not destroyed as many towns in Sherman's path, and numerous Civil War sites remain. Tree-lined streets with 18th and 19th century homes make the residential areas an enjoyable place to stroll.



Live (our)



The *Cheraw Town Green* is home to several of Cheraw's most historic properties, including the *Lyceum Museum*, c. 1825, the *Market Hall*, c. 1837, the *Inglis-McIver Law Office*, c. 1830, and the *Town Hall*, c. 1858. A statue of jazz great, *Dizzy Gillespie*, a Cheraw native, keeps watch over this tranquil spot.

Before you begin your exploration of old Cheraw, head to the Cheraw Town Hall, the Lyceum Museum or the Greater Cheraw Chamber of Commerce office for a number of complimentary brochures.

History & Heritage Tours & Attractions

Cheraw African American Heritage History Tour

Downtown Cheraw

Discover the hardships and contributions African Americans made to Cheraw's history. With 45 historic sites highlighted, pick up a copy of the *Cheraw African American Heritage History Guide* and visit the churches, education sites, businesses, and homes that played an important role in the heritage of African Americans. Free.

HISTORY.



Cheraw Walking Tour

Cheraw Historic District

One of the best ways to see Cheraw is on foot. Take advantage of a nice day and stroll through the 213-acre Cheraw Historic District, listed on the National Register of Historic Places.

The complimentary *Historic Cheraw Self-Guided Walking Tour* brochure is a great companion, whether you visit only a few sites or the entire tour of 75 homes, businesses, churches, and parks. Free.

Dizzy Gillespie Tour

300 block of Huger Street

Cheraw's most famous native son, *Dizzy Gillespie*, spent his early days in Cheraw. Pick up a copy of the *Dizzy Gillespie* brochure, and with this self-guided tour, see firsthand the places that shaped the life of this future jazz icon, beginning with the site of the Gillespie homeplace. Free.

Historic Cheraw Cell Phone Tour

Cheraw Town Green | 843.865.3002 | cheraw.com

Cheraw's history comes to life with this complimentary self-guided cell phone tour. This leisure stroll through Cheraw's 10-block historic area includes 25 tour stops, providing over 50 historical tidbits of information. While the tour may begin at any stop, many visitors start the tour on the Cheraw Town Green. Free.

Ingram's River Artifacts Room

204 Market Street | 843.537.6565

Located behind town hall, this interesting collection showcases diving finds made in the Great Pee Dee River. Located in the Miller Ingram Law Office, enter through the law office door on weekdays and tell the receptionist you would like to see the display. Free.

Lyceum Museum

Cheraw Town Green | 843.537.8425 | cheraw.com

This one-room museum features exhibits on Cheraw's history, from the pre-colonial area to the 1970's. A key to the museum is available weekdays at the town hall and the chamber of commerce. Free.

Old St. David's Church & Cemetery Tour

100 Church Street | 843.537.8425

Built in the 1770's, the graves of soldiers from most American wars and the first Confederate monument ever erected may be found in the church cemetery. A complimentary brochure shares the rich history of this special place in a self-guided tour. The church is open free to the public on request, and the sanctuary is available for a fee for weddings and special occasions.

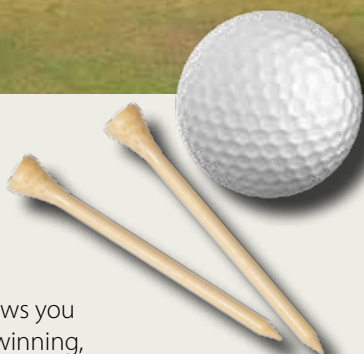
Southern African American Heritage Center

125 Kershaw Street | 843.921.9989

Dedicated to preserving African-American contributions in Chesterfield County, the center also features an exhibit dedicated to jazz great Dizzy Gillespie. For admission costs and museum hours, contact the center.



Live OUTSIDE.



Golf Courses

Cheraw's mild climate allows you to play one of our award-winning, affordable courses year-round. Located on the same sand hills ridge as the famous Pinehurst courses, both courses are located on US Highway 52, four miles south of Cheraw.

Cheraw State Park Golf Course

100 State Park Road | 843.537.2215 | toll free 800.868.9630
Full pro shop. 18 holes. 6,928 championship layout designed by Tom Jackson. Designated as "Best Places to Play" and "Super Value" by Golf Digest.
southcarolinaparks.com

Moree's Cheraw Country Club

2431 Old Cash Road | 843.537.3412 | cherawgolf.com
Full pro shop. 18 holes. 6,459 yards. First nine holes designed by Donald Ross, one of the most significant golf course designers.

Hunting

Several Wildlife Management Area sites are located in the vicinity with one private preserve. For details on the Wildlife Management Area sites, visit dnr.sc.gov.

Moree's Sportsman Preserve

US Highway 52 South | 843.378.4831 | moreespreserve.com
Unique outdoor experience for both the seasoned hunter and non-hunter. Located ten miles south of Cheraw on approximately 5,000 acres, the 25 to 50-acre ranges offer the best possible hunting environment and game availability. Lodging and meal packages are also available.

Fishing

The area provides a variety of fresh water fishing opportunities including the *Cheraw State Park*, *Carolina Sandhills National Wildlife Refuge*, *Sand Hills State Forest*, and the *Great Pee Dee River* (access at Riverside Park on Church Street). For details about fishing rules and regulations and purchasing licenses, visit dnr.sc.gov/fishing



Live LARGE.



There are more than 96,000 acres of public land in Chesterfield County. In addition to the Cheraw State Park and Cheraw town parks, H. Cooper Black Jr. Memorial Field Trial and Recreation Area, Sand Hills State Forest and Carolina Sandhills National Wildlife Refuge provide extensive facilities for a variety of outdoor activities. Maps, permits, and information are available at the sites. User fees may apply at some sites.

Cheraw State Park

100 State Park Road | 843.537.9656 | southcarolinaparks.com

The oldest and largest park in South Carolina's park system, the park is located on US Highway 52, 4 miles south of Cheraw.

Encompassing 7,361 acres, many activities await your visit.

Enjoy a walk along the lake's boardwalk, camp by the edge of Lake Juniper at one of 17 camping sites or stay for a week in

one of the park's cozy cabins. Camp

sites offer electric and water hook-ups, RV dumping station and showers.

Horse camping sites and primitive tent camping are offered as well. Besides

the championship golf course, you

will find fishing, canoeing, kayaking,

camping, picnicking, and a variety

of trails for bridle, hiking, nature and

mountain bikes. The park also features

two large group camps.





Sand Hills State Forest

US Highway 1 South | 843.498.6478

A variety of recreational opportunities are available within the 46,000 acres, located 18 miles southwest of Cheraw. Enjoy fishing, hiking, and over 80 miles of equestrian trails as well as camping and picnic sites. The state forest is part of the Wildlife Management Area Program, and hunting is allowed in season. The red cockaded woodpecker, pixie moss and the pine barren tree frog are some of the rare plants and animals you will find here.

Sugar Loaf Mountain

Scotch Road

Towering 100 feet above the surrounding state forest, this mini mountain has been a favorite gathering place for generations. Site includes a 1.7-mile nature trail and primitive and horse camping sites. Sugar Loaf is part of the remains of the oldest mountain chain in North America. Blooming Mountain Laurel in May adds to the beauty of the area. Travel 17 miles on US Highway 1 South. Go north on Ruby-Hartsville Highway for approximately 3 miles, turn on Scotch Road, and follow signs.

H. Cooper Black Jr. Memorial Field Trial & Recreation Area

279 Sporting Dog Trail | 843.378.1555 | southcarolinaparks.com

One of the best field trial facilities on the east coast, both regional and national events are held here throughout the season. With over 20 miles of trails and sand roads for riding horses, the site also has a 24 stall horse barn, secured kennels, 63 corrals, 27 camp sites with electric hook-ups, 33 camp sites without electricity, showers, RV dump station, clubhouse, and arena. Accessible via US Highway 1 South or US Highway 52 South.

Carolina Sandhills National Wildlife Refuge

US Highway 1 South, McBee | 843.335.8401

fws.gov/carolinasandhills

Within the 47,850 acres of the refuge are over 100 miles of hiking and biking trails, wildlife viewing platforms, bird blinds and a number of ponds. Hunting and fishing are allowed during certain seasons, and the area provides an excellent site for bird watching. The refuge is one of the premier sites for viewing the rapidly diminishing longleaf pine/wiregrass ecosystem. Located 24 miles southwest of Cheraw.

Bird Watching

A number of great sites are available in the area to spot the endangered red-cockaded woodpecker and the southern bald eagle in addition to over 200 species of birds. The *Carolina Sandhills National Wildlife Refuge* has observation towers, viewing platforms and a photography blind. A birding checklist, special events and brochures are available at the refuge. *Cheraw State Park* also offers birding opportunities, especially at the headwaters of Lake Juniper and along the boardwalk trail.

Cheraw Fish Hatchery

433 Fish Hatchery Lane | 843.537.7628 | hatcheries.dnr.sc.gov

Operated by the SC Department of Natural Resources, this hatchery is one of five in the state serving a vital role in the management of South Carolina's fishery resources. Located five miles south of Cheraw on US Highway 1 South, the Cheraw Fish Hatchery is a warm water hatchery, producing approximately 2 million fish annually for stocking the state's public lakes and rivers to enhance recreational fishing activities. To schedule a tour, please call the hatchery manager.





Parks & Recreation Centers

Cheraw has a number of well-maintained parks and recreation facilities, and the town is known throughout the state for its Recreation & Leisure Services program.

Cheraw Community Center

200 Powe Street | 843.537.8421

Basketball court, banquet facilities, teen center, game room, Burr Art Gallery, and administrative offices

Cheraw Gymnastics Center

45 Powe Street | 843.537.8421 | cherawgymnastics.com

Arrowhead Park

989 State Road | 843.537.8421

Four lighted baseball fields, lighted soccer and football field, walking trail, landscaped playground, and picnic shelter

Brown Park

Tote Road | 843.537.8421

Neighborhood playground

Caston Park

Market Street & High Street entrances | 843.537.8421

Four lighted tennis courts, lighted youth baseball field, playground, and picnic shelter

Centennial Park

Corner of Market & Second Streets | 843.537.8421

Large fountain & gazebo; venue for seasonal events

Foundry Hill Park

Corner of Foundry Hill Road & Prestige Park | 843.537.8421

Neighborhood playground and basketball goal

Huckleberry Park

Huckleberry Drive | 843.537.8421

Neighborhood playground and picnic tables

Levi G. Byrd Park

Corner of Church & Front Streets | 843.537.8421
Basketball court and neighborhood playground

Long Park

West Greene Street | 843.537.8421
Neighborhood playground

Riverside Park

Northeast Church Street | 843.537.8421
Enjoy a beautiful panoramic view of the Great Pee Dee River on the observation deck. Park includes dual lane boat ramp, picnic area, covered shelter, nature area, and walking trails.

Southside Park

Roddy Street | 843.537.8421
Baseball field & neighborhood playground



Live to EAT.



Bill's BBQ

3566 Highway 9 West | 843.865.9177

Bobo's Sports Tavern

171 Second Street

Bojangles

881 Chesterfield Highway | 843.537.1636

Brady's Restaurant

80 Powe Street | 843.537.4846

Burger King

1014 Chesterfield Highway | 843.921.2004

Cabin Creek Restaurant

2529 US Highway 1 | 843.537.4195

China King

157 Second Street | 843.537.8980

China Town Buffet

540 Chesterfield Highway | 843.921.9288

College Inn Diner

324 Second Street | 843.537.3535

Country Kitchen

908 Chesterfield Highway | 843.537.3662

El-Sherif's House of Pizza

315 Second Street | 843.921.0066

Fatz Café

973 Chesterfield Highway | 843.537.4205

Fiesta Tapatia

803 Market Street | 843.921.0200

Hardee's

801 Market Street | 843.537.3691

Huddle House

686 US Highway 1 | 843.537.0222

Hunter's Lounge

155 Second Street

Hwy. 55 Hamburgers

1624 Chesterfield Highway

Jesse's Subs

1153 West Greene | 843.537.6999

Kentucky Fried Chicken

428 Chesterfield Highway | 843.537.3371

Mary's Restaurant

134 Market Street | 843.537.6790

McDonald's

300 Chesterfield Highway | 843.537.4090

Oskar's

130 Second Street | 843.320.0303

Oslo's Spirits & Grill

302 Chesterfield Highway | 843.537.6000

Pizza Hut

203 Chesterfield Highway | 843.537.5206

River's Edge Restaurant & Bakery

162 Second Street | 843.537.1109

Seasons of Cheraw

129 Market Street | 843.537.3190

Sonic Drive-In

310 Chesterfield Highway | 843.537.0134

Sub Station II

1040 Chesterfield Highway | 843.537.5750

Subway

441 Chesterfield Highway | 843.537.6804

The Shed

116 Second Street | 843.253.5282

Tokyo Japanese Cuisine

1040 Chesterfield Highway
843.537.6008

Wendy's Hamburgers

875 Chesterfield Highway
843.537.3347



Live COMFY.



Cheraw State Park Cabins & Campground

100 State Park Road | 843.537.9656 | 866.345.7275
southcarolinaparks.com

Days Inn of Cheraw

820 Market Street | 843.537.5554 | 800.325.2525
daysinn.com

Executive Inn

710 Market Street | 843.537.2101 | 800.424.6423

Inn Cheraw

321 Second Street | 843.537.2011 | 800.535.8709
inncheraw.com

Quality Inn

885 Chesterfield Highway | 843.537.5625 | 877.424.6423
qualityinn.com

Spears Guest House

228 Huger Street | 843.537.1097 | 888.424.3729
spearsguesthouse.com

Properties include four bedroom guest house, two short term apartments and cabin

Shopping

Shop the brick-lined sidewalks of Cheraw's historic downtown district for a variety of retail and specialty shops, an antiques store, and locally owned restaurants. On the edge of downtown, along the SC Highway 9 corridor, you will find specialty shops, national retailers, and grocery chains.

Live HERE.



Climate

Cheraw enjoys four distinct seasons and generally moderate temperatures:

- Average January Temperature: High 53° F/ Low 31° F
- Average April Temperature: High 74° F/ Low 48° F
- Average July Temperature: High 91° F/ Low 70° F
- Average October Temperature: High 74° F/ Low 50° F

Medical Care

Chesterfield General Hospital is a 59-bed hospital, offering a wide-range of healthcare services. CGH is located at 711 Chesterfield Highway. For more information, visit chesterfieldgeneral.com or call 843.537.7881. Emergency 911.

Location

Cheraw is located in the northeastern midlands of South Carolina, and is easily reached via US Highway 1, US Highway 52, and SC Highway 9.

- | | | | |
|-----------------|----------|--------------------|-----------|
| • Florence, SC | 40 miles | • Myrtle Beach, SC | 100 miles |
| • Pinehurst, NC | 45 miles | • Charleston, SC | 155 miles |
| • Charlotte, NC | 75 miles | • Asheville, NC | 205 miles |
| • Columbia, SC | 90 miles | | |

Cheraw Farmers Market

Front Street, across from Old St. David's Church
Area farmers share their delicious homegrown produce, generally beginning in the spring and ending in the late fall. During the summer, the market is open on Tuesdays, Thursdays, and Saturdays.



Transportation

Cheraw Municipal Airport

Lynch Bellinger Field | South Carolina Highway 9

843.537.6423 | 843.537.5091

5,000 ft. runway. Commercial airports are located in Florence, Columbia, Myrtle Beach, Charlotte.

Enterprise Car Rentals

697 Chesterfield Highway | 843.537.6250

Amtrak

Hamlet, NC | 800.872.7245

Media

The Cheraw Chronicle: 843.537.5261

The Link: 843.537.7887

WCRE 1420 AM | 93.9 FM: 843.537.7887

The Chesterfield County Shopper: 843.537.2791



Research

Matheson Library

227 Huger Street, Cheraw | 843.537.3571 | chesterfield.lib.sc.us

Genealogy

Matheson Library History Room

227 Huger Street, Cheraw | 843.537.3571 | chesterfield.lib.sc.us

Chesterfield County Library

119 Main Street, Chesterfield | 843.623.7489

Chesterfield County Courthouse

200 W. Main Street, Chesterfield

Chesterfield County Genealogical Library

2249 W. Main Street | 843.623.2244 - call first
chesterfield.scgen.org

Important Numbers

Office of Tourism: 843.537.8425 | 888.537.0014

Greater Cheraw Chamber of Commerce:
843.537.7681

Town Hall: 843.537.7283

Fire Department: 843.537.5941 non-emergency
911 emergency

Police Department: 843.537.7868 non-emergency
911 emergency

Cheraw Community Center: 843.537.8421

Live LIFE.



Visit cheraw.com and facebook.com/cheraw.carolina for updates and additional events. The Cheraw Arts Commission has a regular schedule of events. Call 843.537.8421 x12 for details.

Late March to Early April

Cheraw Spring Festival

Family entertainment, great food, arts & crafts, children's activities & more
Cheraw Community Center & Downtown Cheraw
843.537.8421 | cheraw.com

April

Taste of Cheraw

The Greater Cheraw Chamber of Commerce hosts this annual social event.
Ticketed event | 843.537.7681
cherawchamber.com

May

Third Thursdays

Live band, dancing & fun
Cheraw Community Center,
200 Powe Street
Admission charged
843.537.8421 | cheraw.com

June

Third Thursdays

Live band, dancing & fun
Cheraw Community Center,
200 Powe Street
Admission charged
843.537.8421 | cheraw.com

July

Independence Celebration

Downtown children's parade and music and fireworks at dusk July 3

Free admission | 843.537.8421
cheraw.com

Third Thursdays

Live band, dancing & fun
Cheraw Community Center,
200 Powe Street

Admission charged
843.537.8421 | cheraw.com

August

Third Thursdays

Live band, dancing & fun
Cheraw Community Center,
200 Powe Street

Admission charged
843.537.8421 | cheraw.com

October

South Carolina Jazz Festival

Celebrate native son Dizzy Gillespie's birthday with great music, food & fun during the third weekend in October.

Admission charged on some events | 843.537.8421
scjazzfestival.com

December

Cheraw ChristmasFest

Celebrate Christmas with family fun. Santa, children's rides, activities & more
Downtown Cheraw | Second Saturday | cheraw.com

Cheraw Christmas Parade

Downtown Cheraw
cheraw.com

A number of Christmas concerts, movies, and events are planned throughout the month. Visit cheraw.com and facebook.com/cheraw.carolina for dates & times.



Welcoming Guests for Over 250 Years


CHERAW
South Carolina



LEGEND

-  Visitor Info
-  Parking
-  Lodging
-  Hospital
-  Grocery
-  ATM
-  Schools
-  Library
-  Restrooms
-  Golf Course
-  Parks
-  Airport

Historic District

- Tours
- Lodging
- Recreation

A

Points of Interest

- 1** Town Green
- 2** Town Hall
- 3** Market Hall
- 4** Old St. David's Church
- 5** Chamber of Commerce
- 6** Community Center
- 7** Downtown
- 8** Dizzy Gillespie Homesite Park
- 9** Arrowhead Park
- 10** Northeastern Technical College
- 11** Cheraw State Park
- 12** H. Cooper Black Recreation Area

Downtown District

- Restaurants
- Lodging
- Shopping
- ATM

B

Highway 9 Corridor

- Restaurants
- Lodging
- Shopping
- Medical
- ATM

C

NATURAL AREAS
Cheraw State Park
Sand Hills State Forest
H. Cooper Black Field Trial Area
Cheraw Fish Hatchery
Carolina Sandhills National
Wildlife Refuge
Moree's Cheraw Country Club



11 12

Explore. Relax. Enjoy.

c. 1730

Named for the Cheraw Indians, whose settlement was nearby, Cheraw began as a small trading post at the head of navigation on the Great Pee Dee River. By 1750, Cheraw was one of six places in South Carolina appearing on English maps and was an established village with a growing river trade. Joseph and Eli Kershaw were granted a part of what is now Cheraw in 1768 and shortly thereafter laid out the wide streets and Town Green, now the heart of the 213-acre National Register Cheraw Historic District.



“I MADE CHER
Sizzle!

***Dial (843)865-3002
and uncover
Cheraw’s
fascinating
past with our
complimentary
Historic
Cheraw
Cell Phone
Tour.***



AW'S HISTORY

”

– *Queen Victoria*



WHERE OUR

HISTORY

Comes to Life!



Please visit the
**South Carolina
Welcome Centers**
for traveler assistance.

Located in the northeastern midlands of South Carolina, Cheraw is a 40 minute drive from I-95 at Florence or Dillon, 85 miles northeast of Columbia, SC and 75 miles southeast of Charlotte, NC. Cheraw is easily reached via US 1, US 52 or SC 9.

For more information come see us at the

Cheraw Office of Tourism

200 Market Street, Cheraw, SC 29520

Call us at 843-537-8425 or toll free at 888-537-0014

Visit our web site at

 www.CHERAW.com

This guide is not an all inclusive listing of area businesses and attractions. Every effort has been made to ensure accuracy.

**South Carolina
Just right.**

